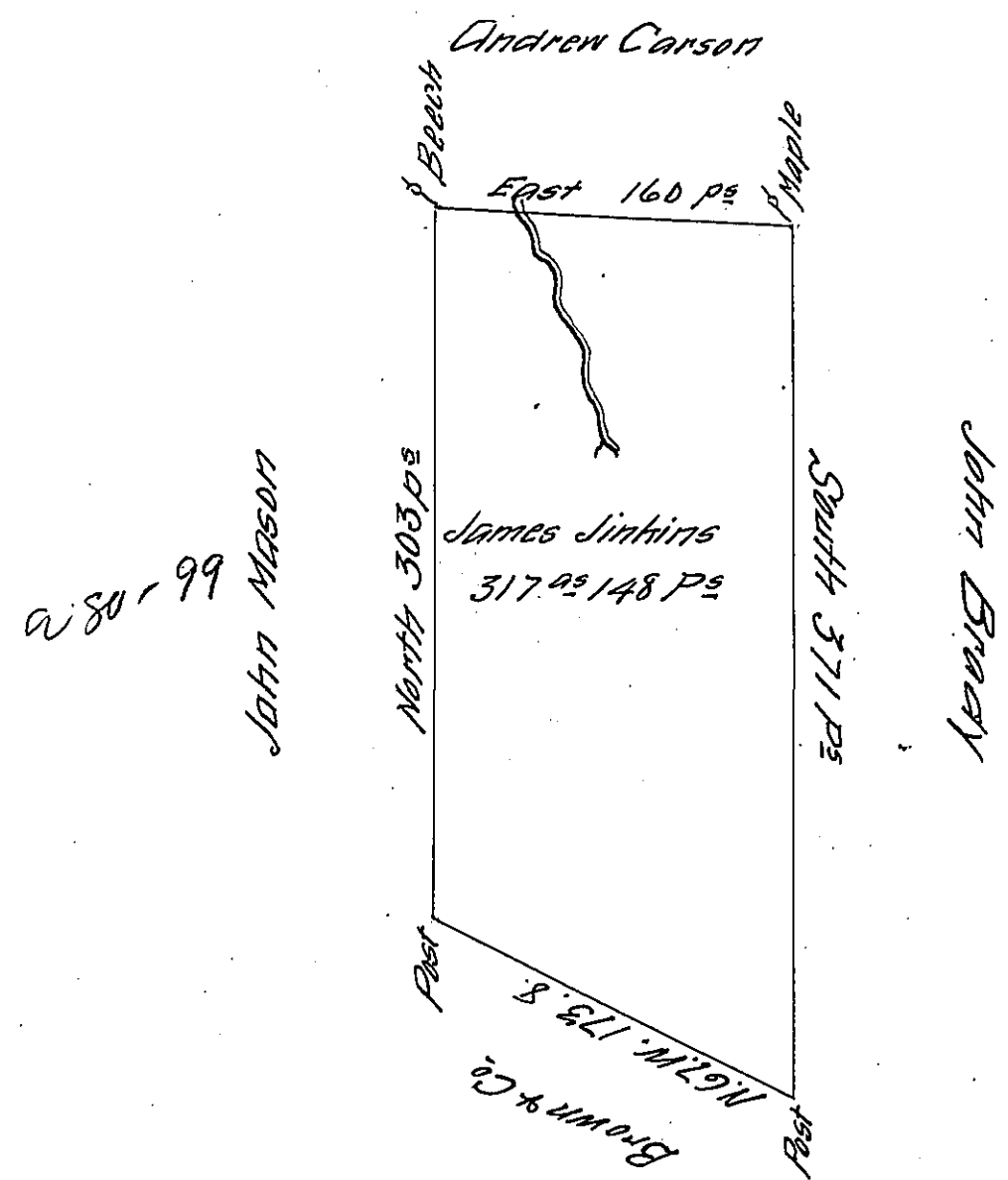


0136

340



Situate on the waters of two Lick Creek in Wheatfield Town-
 ship Westmorland County. Containing 317 Acres & 148 Perches
 and allowance for Roads &c. Surveyed the 22^d day of Nov^r
 1794. for James Sinkins on Warrant dated the 3^d day of May
 1793. James Foss D.S.

Daniel Brodhead Esq. S.G.

IN TESTIMONY that the above is a copy of the original remaining on file in
 the Department of Internal Affairs of Pennsylvania, made
 conformably to an Act of Assembly approved the 16th day of
 February, 1833, I have hereunto set my Hand and caused
 the Seal of said Department to be affixed at Harrisburg,
 this first day of February 1911.

Nancy Howell
 Secretary of Internal Affairs.